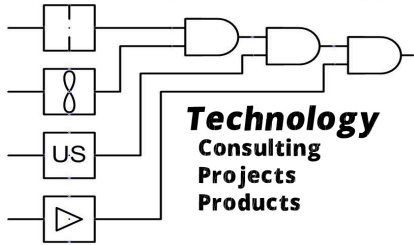


# METROLOGICS, LLC



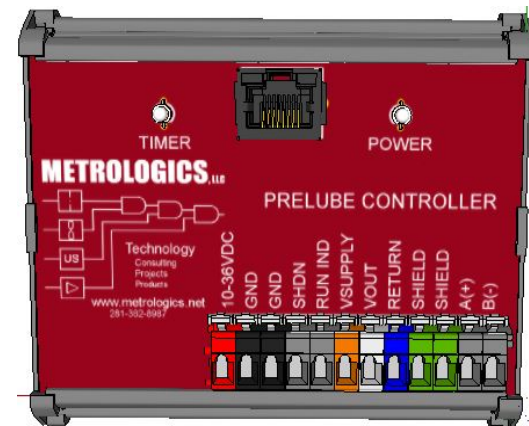
[www.Metrologics.net](http://www.Metrologics.net)

**(281) 382-8987**



## Programmable Controller MPC

\*Final Product may differ from artwork.



Copyright © 2014 Metrologics, LLC. Katy, TX.

### Main Features

- DIN-Rail mountable assembly
- 12 to 36 VDC Powered
- Low Power Consumption, ~ 18 mA
- On-Board Thermal Self-Resetting Power Input Fuse
- Multi-color Status LED's for Power, and Timer functions
- On-board I/O
  - ▶ 1-AI, 1-5 VDC (shunt resistor supplied for 4-20 mA input)
  - ▶ 1-DI, (can be used for engine run status when used as a Pre-Lube Controller, or for HH level switch)
  - ▶ 1-DO, FET (shunts to GND for control, requires external relay for load switching)
  - ▶ 1-RS485, Half duplex, Modbus RTU Slave Comm Port
  - ▶ 1-RS232 Comm Port (RJ-45, for connection of remote LCD/programmer)

### Options

- LCD/Programming Unit
- Touchscreen HMI, 3.5" (programmed for your application)
- Pressure Transmitters for compressor pre-lube, or tank level measurement
- Data-Logger/Alarm Monitoring Unit (see MCAM product datasheet)
- NEMA-4X or EX enclosures
- Solar/Battery System

**Uses:** *Compressor Pre-Lube Controller, Tank Level/Pump Control, etc.*



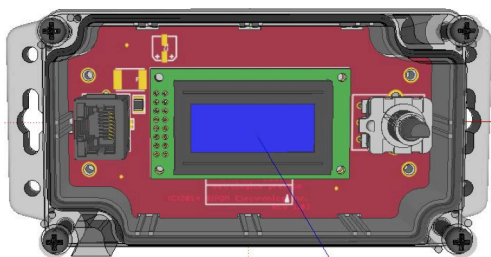
## Specifications:

Operating Voltage:	10 to 36 VDC
Power Draw:	18 mA @ 12VDC
Digital Inputs:	1 Dry Contacts
Digital Outputs:	1, FET, Shunts to ground (requires external relay for pump control)
Analog Inputs:	1 x 1-5 VDC input (shunt resistor supplied for 4-20 mA tank level transmitters)
Communications Ports:	1-RS232 RJ45 (programmer and LCD unit MPC-RCU), 1-RS485 (Modbus RTU Slave, terminal blocks)
Programming:	Metrologics MPC-RCU remote LCD/Programmer available, or can be programmed using Modbus registers
Operating Temp:	40 to +70C (-35F to 140C)

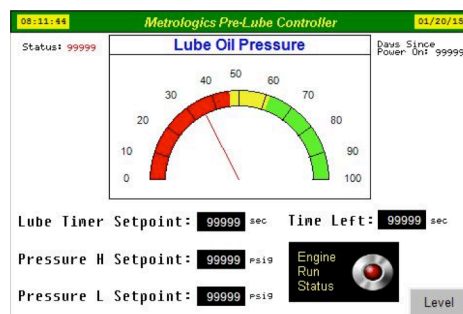
## Options:

- Cellular or Satellite based alarm monitoring units
- Remote LCD/Programmer (MPC-RCU product), Utilizes unique single switch for selection, value entry, etc. (see below)
- 3.5" HMI, Touchscreen (programmed for your application)
- NEMA-4X or EX enclosure
- Solar/Battery Power System

MPC-RCU



3.5" HMI Screenshot



**We program, sell, install, and service these products and can arrange a service contract to meet your needs.**

For more information about this product, please contact us at (281)-382-8987.

Physical location:

27027 Westheimer Pkwy., Suite 700,  
Katy, Texas 77494, USA

\*Quotations are provided upon request.\*